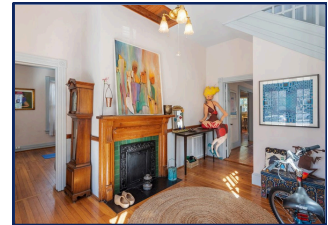


## 516 N Bloodworth St - Oakwood Classic circa 1891



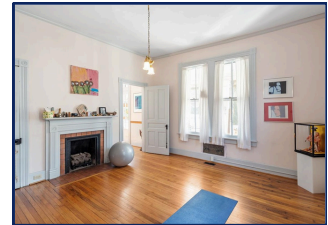
- 2,135 square feet
- Updated kitchen
- 2 bedrooms. 2 updated full baths
- 2nd floor office/nursery/flex space
- Options for 3rd bedroom on 1st floor
- \$975,000



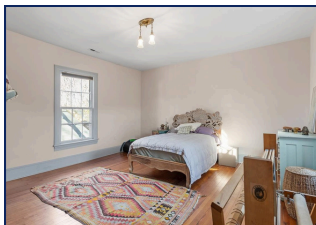
With a spacious front porch for evening talks and kids' trikes, the restored Annie M Riddle House (c.1891) is an Oakwood classic.



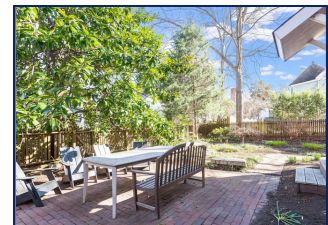
The current owner's thoughtful upgrades – both seen and unseen – include kitchen, baths and historically sensitive custom wood doors and hardware.



The versatile floor plan - with a full 1st floor bath, a family/living room (now a Yoga studio), dining, and sun rooms - offers options for a 1st floor bedroom. Steps lead to the unfinished floored attic from the flex space, formerly a smaller 3rd bedroom which characteristic of older homes was dependent on a wardrobe for closet storage. Expansion options also exist to add more space for a bedroom and/or bath. Reach out to see a copy of the floor plan!



The 0.13 acre lot includes off street parking and a fenced side & back yard with garden areas and patio.



Mickey D'Loughy

919.559.5508

TheRealtorMickeyD@gmail.com

www.mickeydloughy.com



1033 Oberlin Rd #200  
Raleigh, NC 27605



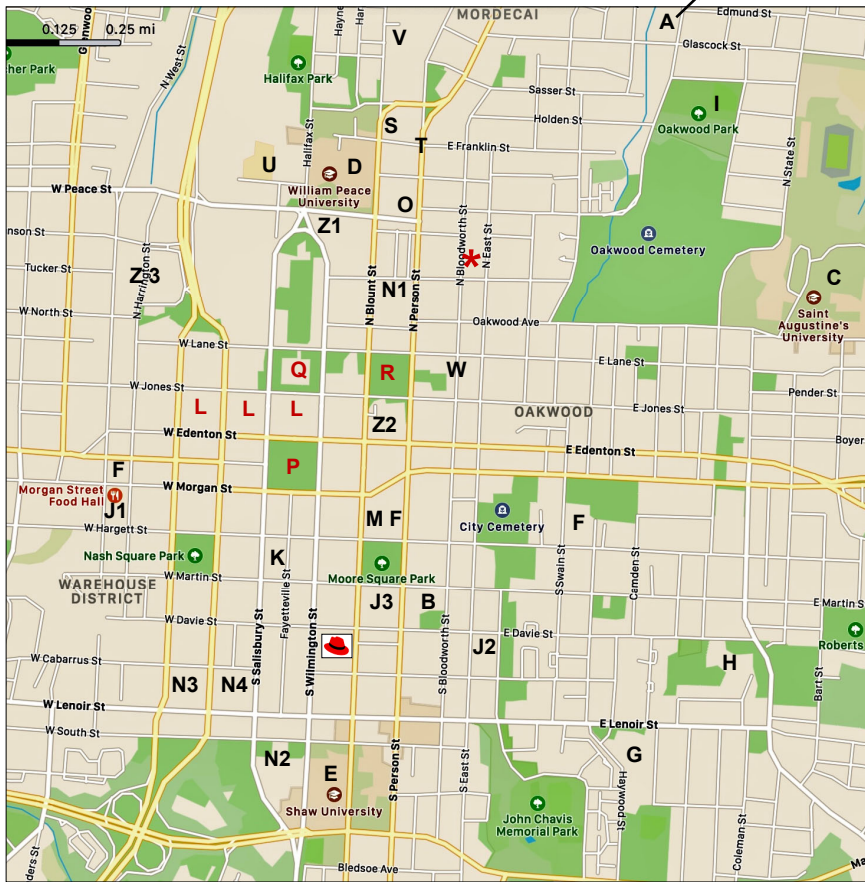
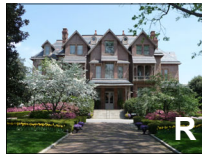
www.metrodigs.com

Peter Rumsey

919.971.4118

Peter@PeterRumsey.com





**516 N Bloodworth St \***

Schools & Universities

- A Conn Elementary School.
- B Moore Square Magnet Middle School
- C St. Augustine's College, 1868
- D William Peace University, 1857
- E Shaw University, 1865
- F Exploris Schools
- G Ligon Magnet Middle School
- H Hunter Elementary School

Other

- I Oakwood Dog Park
- J1 Morgan Street Food Hall
- J2 Transfer Co. Food Hall
- J3 Moore Square/City Market
- K City of Raleigh (COR) Museum
- L [NC Museums - History & Natural Science](#)
- M [Marbles Kids Museum](#)

- N1 Burning Coal Theater
- N2 Performing Arts Center
- N3 Red Hat Amphitheater
- N4 Raleigh Convention Center
- O Krispy Kreme
- P [NC Old State Capitol](#)
- Q [NC Legislative Building](#)
- R [NC Governor's Mansion](#)
- S [Raleigh City Farm](#)

- T Person Street shops - [Crawford & Son](#), Jolie Restaurant, The Station, Pelagic Beer & Wine, So & So Books, Oak City Cycling, Oakwood Pizza Box, Edge Of Urge, Wine Merchant, Yellow Dog Bread Co, Person St Bar, Two Roosters Ice Cream, Unlikely Professionals, Person Street Pharmacy, (ish) delicatessen, more.
- U Seaboard Station - Mixed use under development . . .
- V Stanbury Restaurant, Escazu Artisan Chocolates
- W Side Street Restaurant, Louis Cherry Architecture.
- Z1 NC HQ for American Institute of Architects (AIA)
- Z2 NC Bar Association HQ
- Z3 Smoky Hollow - Mixed use including Publix Grocery.

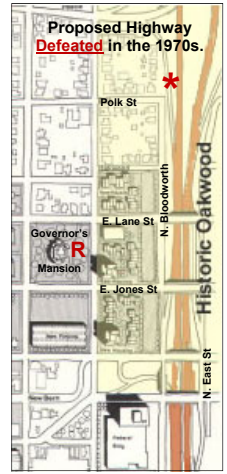
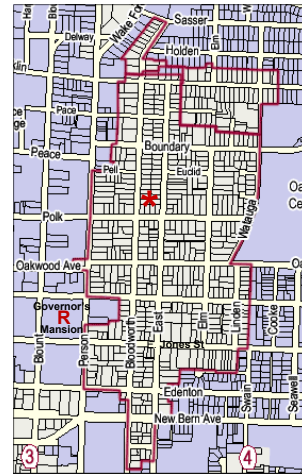
Walk everywhere  
Museums, theaters, galleries, universities, schools, parks, restaurants, shops and much more are walking distance from the tree lined residential streets of Oakwood. The eclectic mix of nearby shops includes bike, books, hardware, wine, pharmacy, chocolates.

Oakwood is an urban village

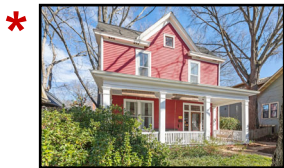
Call for the names of nearby neighbors who can describe Oakwood activities including an annual Candlelight Tour in December, Easter egg hunt, 4th of July parade & picnic, spring jazz brunch, fall pig-picking, monthly pot-luck suppers, garden club, baby-sitting resources, schools, kids and more. Visit the neighborhood web site at [HistoricOakwood.org](#). Go to [OakwoodProject.org](#) and listen to oral histories that include the successful efforts in the 1970s to defeat a north-south expressway that would have destroyed Oakwood. The map, "below right", shows the proposed path of the defeated highway.

Oakwood is a local & national historic district

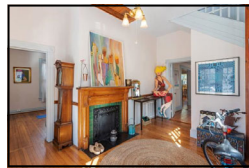
Overlapping local and national Oakwood historic districts are shown in the map below left. In the local district, City approval is required for changes to exterior structures and landscaping. Go to [RHDC.org](#) for detailed maps and Historic District guidelines and procedures.



Additions and/or corrections welcome.



Annie M. Riddle House  
c. 1891  
516 N Bloodworth St  
Raleigh, NC 27604



Mickey D'Loughy

919.559.5508

TheRealtorMickeyD@gmail.com

www.mickeydoughy.com



Peter Rumsey

919.971.4118

Peter@PeterRumsey.com